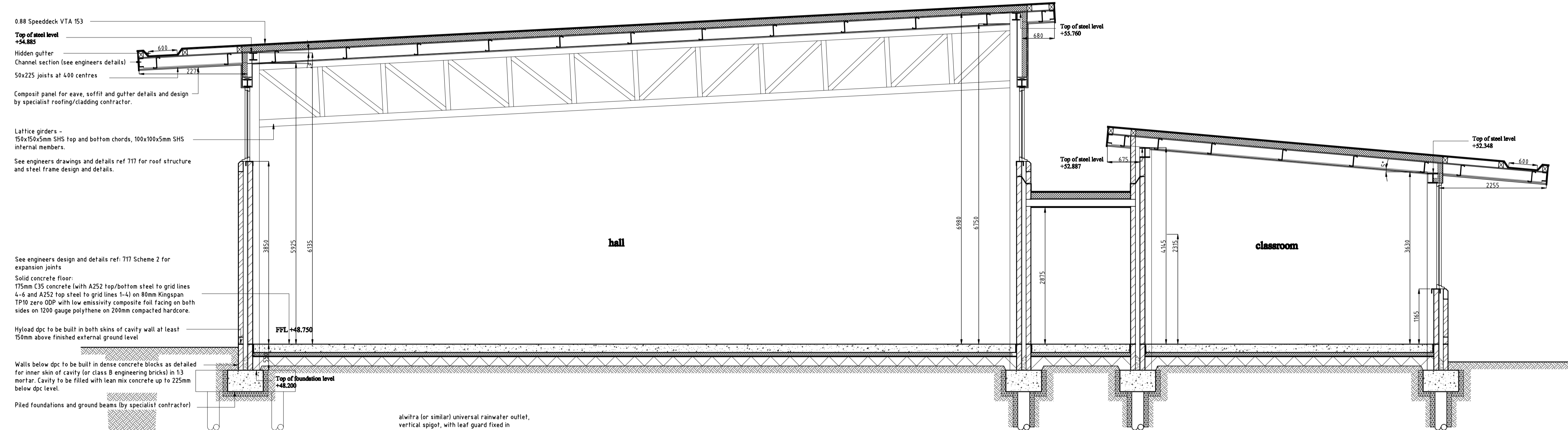
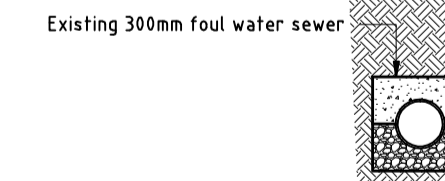


Section A-A



Section B-B



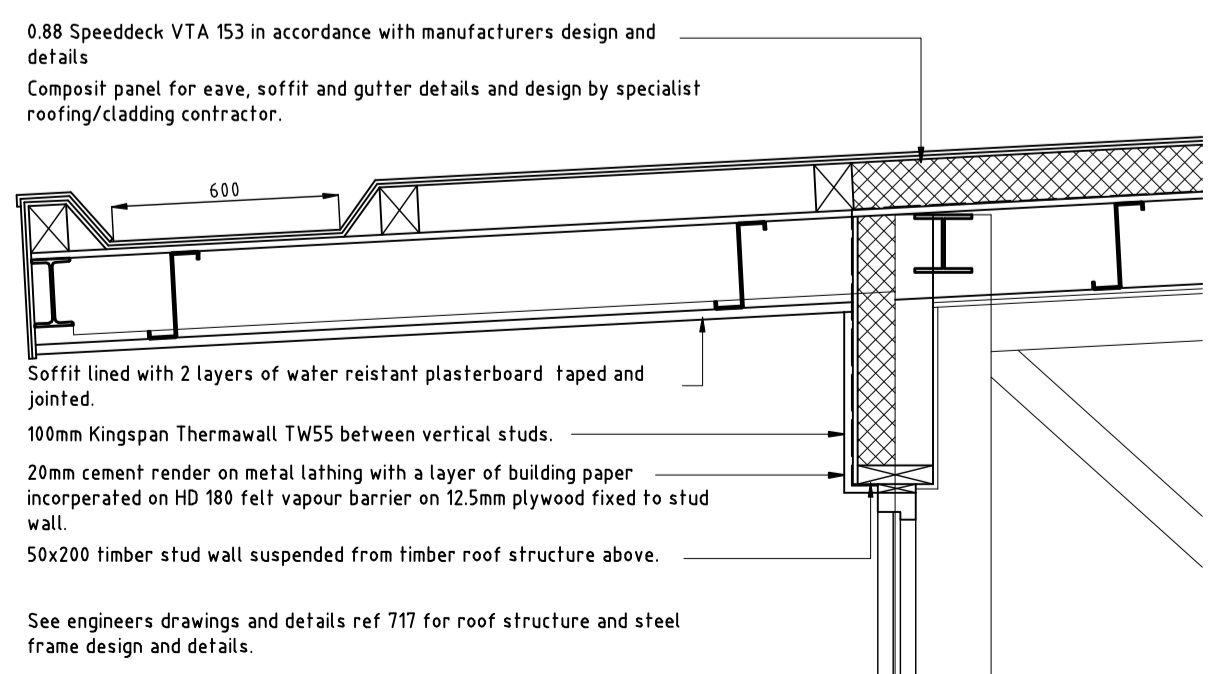
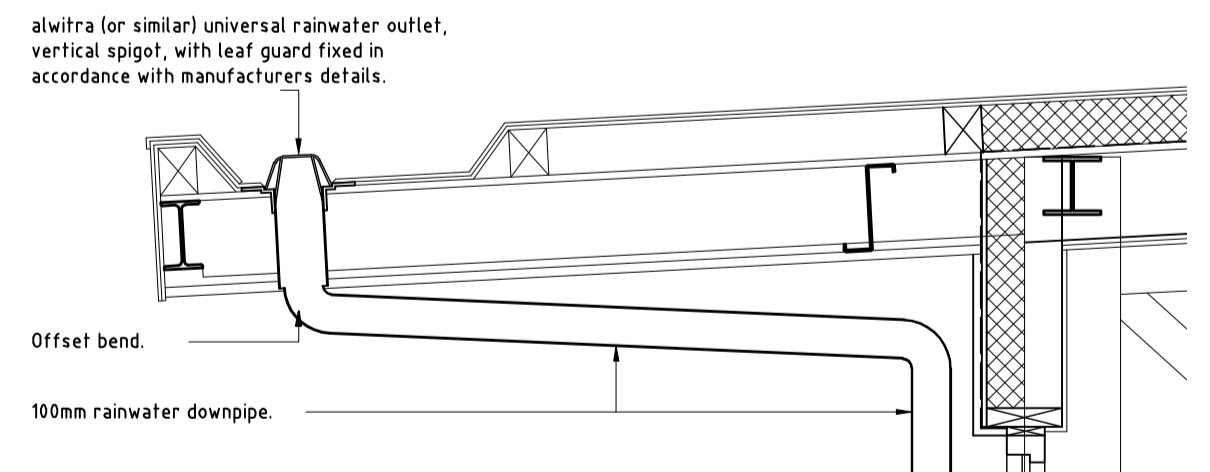
- Notes**
1. Rainwater goods: 100mm dia. downpipes in uPVC. Existing surface water drain to be located on site during foundation excavation and new roddable type rainwater gullies branched into it to local authority approval.
 2. Underground drains: 100mm dia. uPVC by 0.5m or similar laid to min 1:40 fall and bedded and surrounded in 150mm pea shingle. All below ground drainage installation to comply with the recommendations of BS EN 752: 1996 (as amended).
 3. Drains passing through foundations to be protected by precast concrete lintels over with 50mm clearance all round the pipe. Lintels used below dpc to have at least 50mm cover to the reinforcement. Void around pipe to be masked on both sides of wall with rigid sheet material to prevent entry by vermin or backfilling material.
 4. Provide min. 4000mm² background ventilation with 225x150mm stadium or similar uPVC air brick fitted with 'hit and miss' grill internally.
 5. All new windows and doors to be double glazed in Pilkington or similar low emissivity glass with min. 16mm air gap to achieve u value not exceeding 1.80W/m²K for windows and 2.00W/m²K for glazed doors. Each window to habitable rooms to be fitted with trickle ventilators affording not less than 8000mm² effective ventilation area. See drg 8799-BR-05 for safety glazed areas.
 6. Any new boilers to have minimum 85% Sedbuk rating upon completion full instructions to be left for the occupier for operating and maintenance to aid fuel & power conservation. Boiler control interlocks to be fitted so that a heating appliance is switched off when no heating is required by room thermostats or thermostatic radiator valves. Hot water storage system to be megaflo system installed in accordance with manufacturer's instructions by person-qualified CITB installer.

All steel beams to be coated during fabrication prior to delivery with Nullifire intumescent coatings by specialist manufacturer for one hour fire resistance and certification obtained to confirm this.

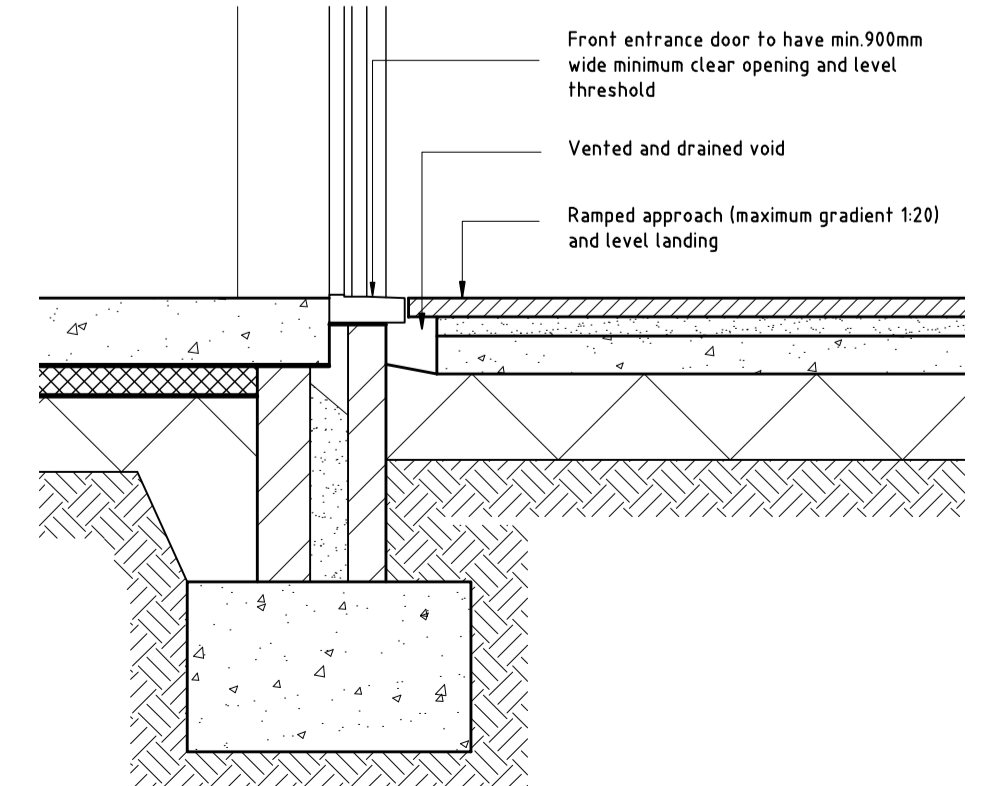
Height of light switches, power points, tv sockets and telephone jack points to be at appropriate heights between 450mm and 1200mm from the finished floor level. Actual positions to be agreed with the client on site.

All electrical work required to meet the provisions of Part P (Electrical safety) must be designed, installed, inspected by a person competent to do so.

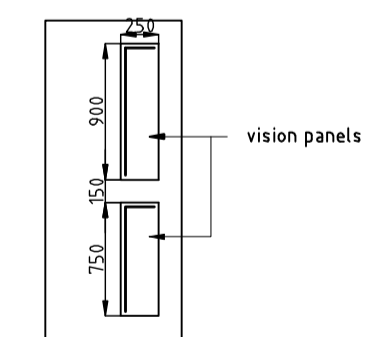
Prior to completion the council should be satisfied that Part P has been complied with. This may require an appropriate BS 7671 electrical installation certificate to be issued for work by a competent person to do so.



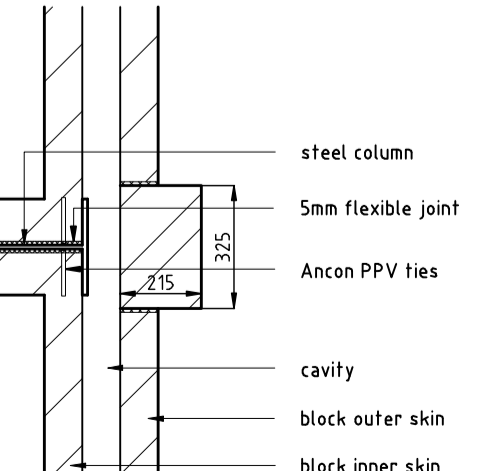
Section through roof eaves



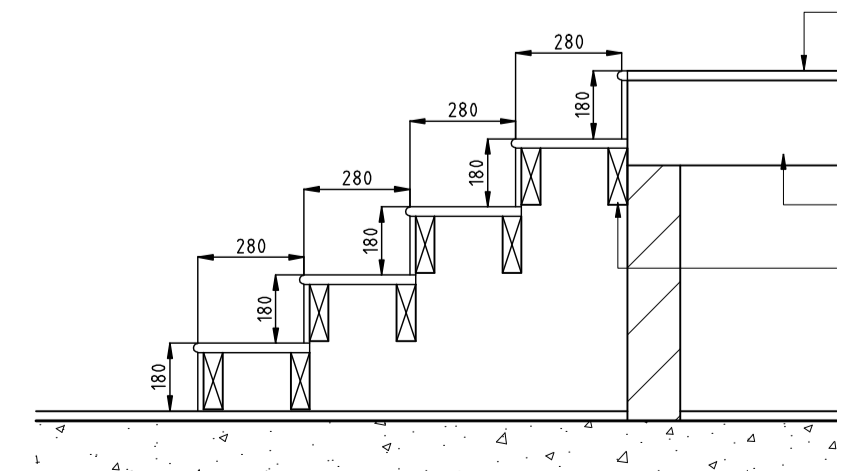
Section through level threshold



Internal door elevation



External wall detail
Scale 1:20



Section through stage stairs
Scale 1:20



Drawing to be read in conjunction with engineers design and details ref: 717 Scheme 2

ABA Chartered Surveyors 49 The Green, Southall, UB2 4AR scale: 1:50 @ A1 date: 03/06/08 drg no: 0834-BR-04		email: aba@aba.co.uk Tel: 020 8574 3335 title: Sections rev: A site: Wembley High Technology College, East Lane, Wembley
-------------------------------------------------------------------------------------------------------------------------------	--	--------------------------------------------------------------------------------------------------------------------------------------